



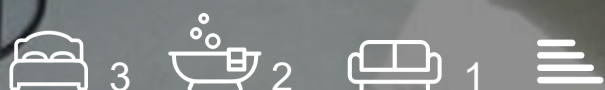
Dawlish Court

£569,995

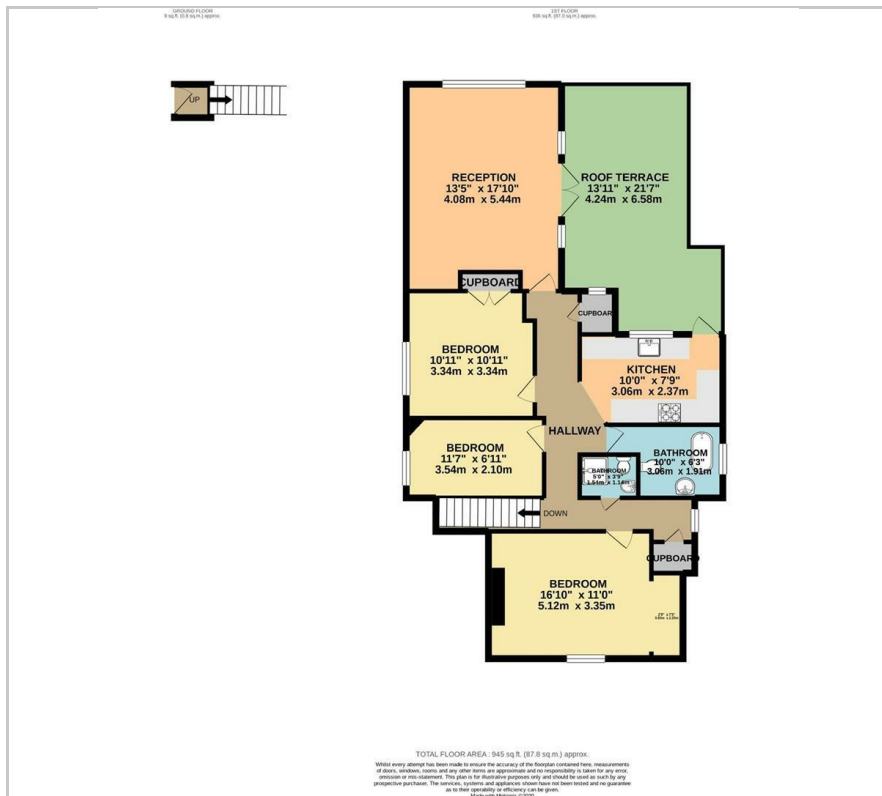
Cosway Estates are pleased to offer for sale this stunning purpose built (over 1000 sq ft) 3 bedroom 2 bathroom apartment with a direct access onto a private terrace and opposite Mill Hill Park. This modern property boasts a spacious master bedroom, 2 further good sized bedrooms and 2 bathrooms. In addition to a modern fully equipped kitchen and spacious lounge with direct access onto a stunning terrace. Further benefits include ample storage, close to excellent local schools and within walking distance to the amenities of mill hill Broadway and the Thames Link Station. Viewing Highly Recommended. Sole Agent.

Viewing

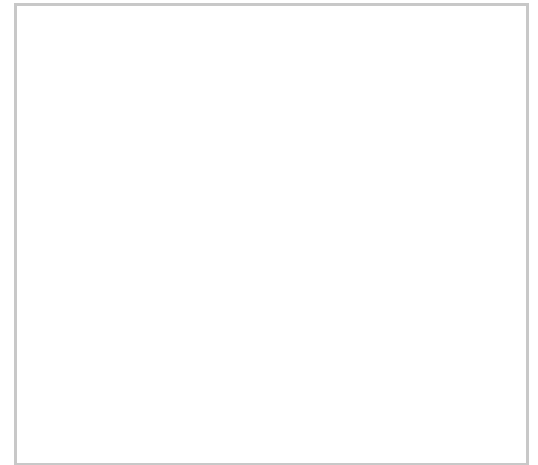
Please contact our Mill Hill Office on 020 8959 0011 if you wish to arrange a viewing appointment for this property or require further information.



Floor Plan



Area Map



Energy Efficiency Graph



These particulars, whilst believed to be accurate are set out as a general outline only for guidance and do not constitute any part of an offer or contract. Intending purchasers should not rely on them as statements of representation of fact, but must satisfy themselves by inspection or otherwise as to their accuracy. No person in this firm's employment has the authority to make or give any representation or warranty in respect of the property.